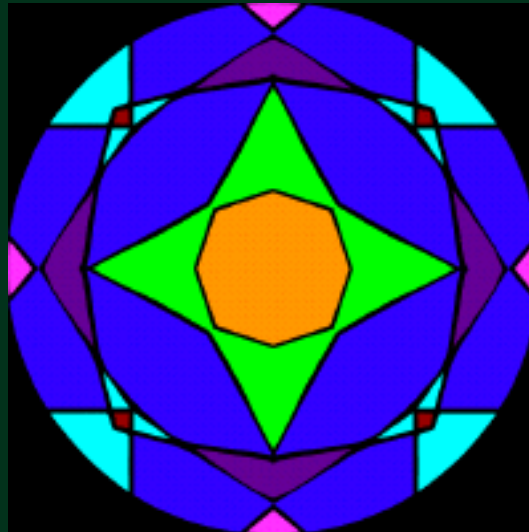


The Asthma Files

Semantic Digital Infrastructures for the Empirical Humanities

PECE (Platform for Experimental and Collaborative Ethnography) Development Group:

- ✧ Mike Fortun (Science and Technology Studies, RPI)
- ✧ Lindsay Poirier (Science and Technology Studies, RPI)
- ✧ Dominic DiFranzo (Information Technology/Web Sciences, RPI)



Overview

- Ethnographic Understanding of How Complex Societies Engage With Complex Problems: Asthma Knowledges, Asthmatic Spaces
- Envisioning World PECE: The Platform for Experimental and Collaborative Ethnography
- Experiments in Progress: Light Structure and Other Tools for Explanatory Pluralism

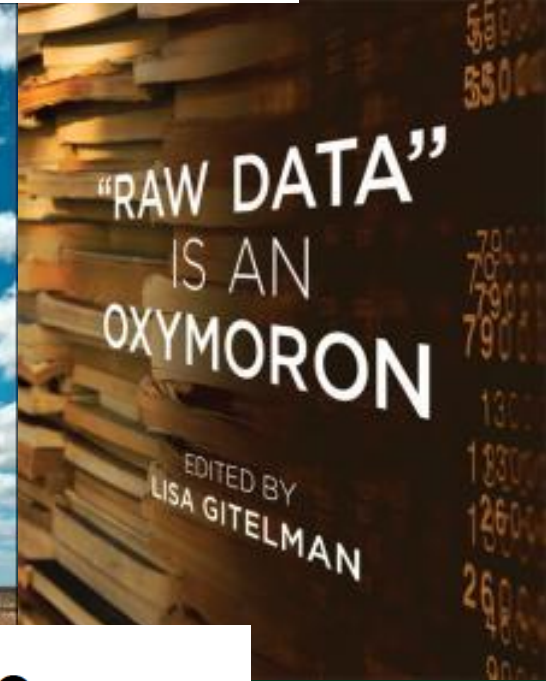
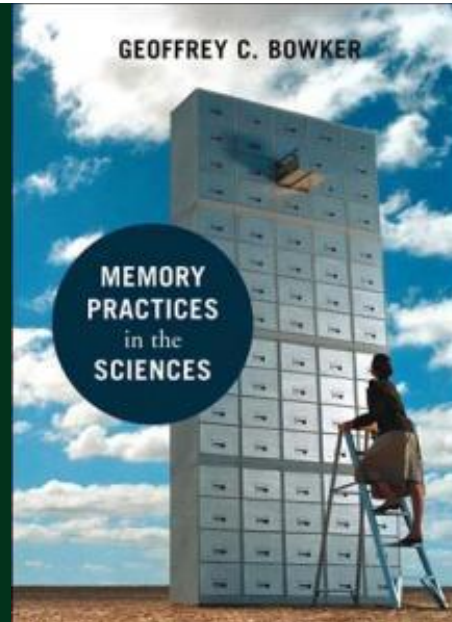
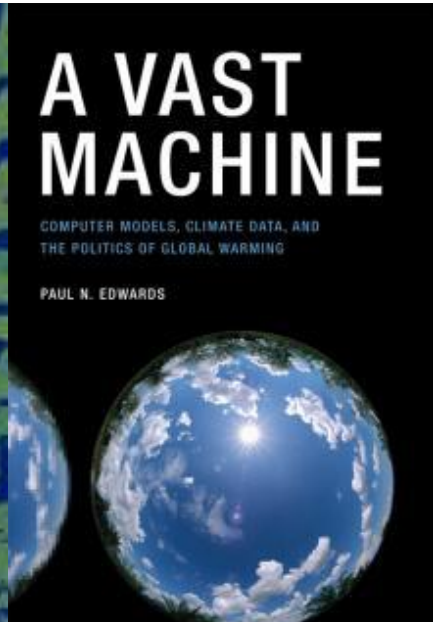
Follow the Data: How astronomers use and reuse data

Ashley Sands
Information Studies
University of California
Los Angeles
ashleysa@ucla.edu

Christine L. Borgman
Information Studies
University of California
Los Angeles
borgman@gseis.ucla.edu

Laura Wynholds
Information Studies
University of California
Los Angeles
lawynholds@gmail.com

Sharon Traweek
Gender Studies & History
University of California
Los Angeles
traweek@history.ucla.edu



Social Studies of Science

<http://sss.sagepub.com/>

Science friction: Data, metadata, and collaboration

Paul N. Edwards, Matthew S. Mayernik, Archer L. Batcheller, Geoffrey C. Bowker and
Christine L. Borgman

Social Studies of Science 2011 41: 667 originally published online 15 August 2011
DOI: 10.1177/0306312711413314

Please help us to prove that open-access anthropology can work!

In making *Cultural Anthropology* free to read, we have given up our most significant source of revenue. We need your help to ensure the financial viability of the journal into the future. Please consider making a donation, big or small, to our publishing fund. And if you aren't a member of the SCA, please think about [joining](#).

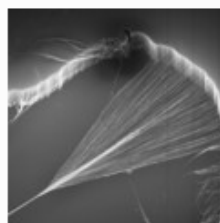
[No thanks](#)
[Donate Now](#)

Fieldsights



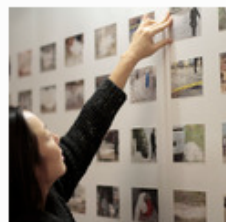
[Fat: Deviation](#)

Harris Solomon posted in [FIELD NOTES](#) on April 20, 2015 with 0 comments



[Generating Capitalism](#)

Laura Bear, Karen Ho, Anna Tsing and Sylvia Yanagisako posted in [THEORIZING THE CONTEMPORARY](#) on March 30, 2015 with 0 comments



[The Bureau of Memories: Archives and Ephemera](#)

Paul Stoller posted in [VISUAL AND NEW MEDIA REVIEW](#) on March 20, 2015 with 0 comments



[Submissions for the 2015 Gregory Bateson Book Prize](#)

Laura Bear posted in [SCA PRIZES](#) on March 17, 2015 with 0 comments

Open Access and Cultural Anthropology

Learn about *Cultural Anthropology's* open access initiatives.

[Learn more](#)

Join the Community

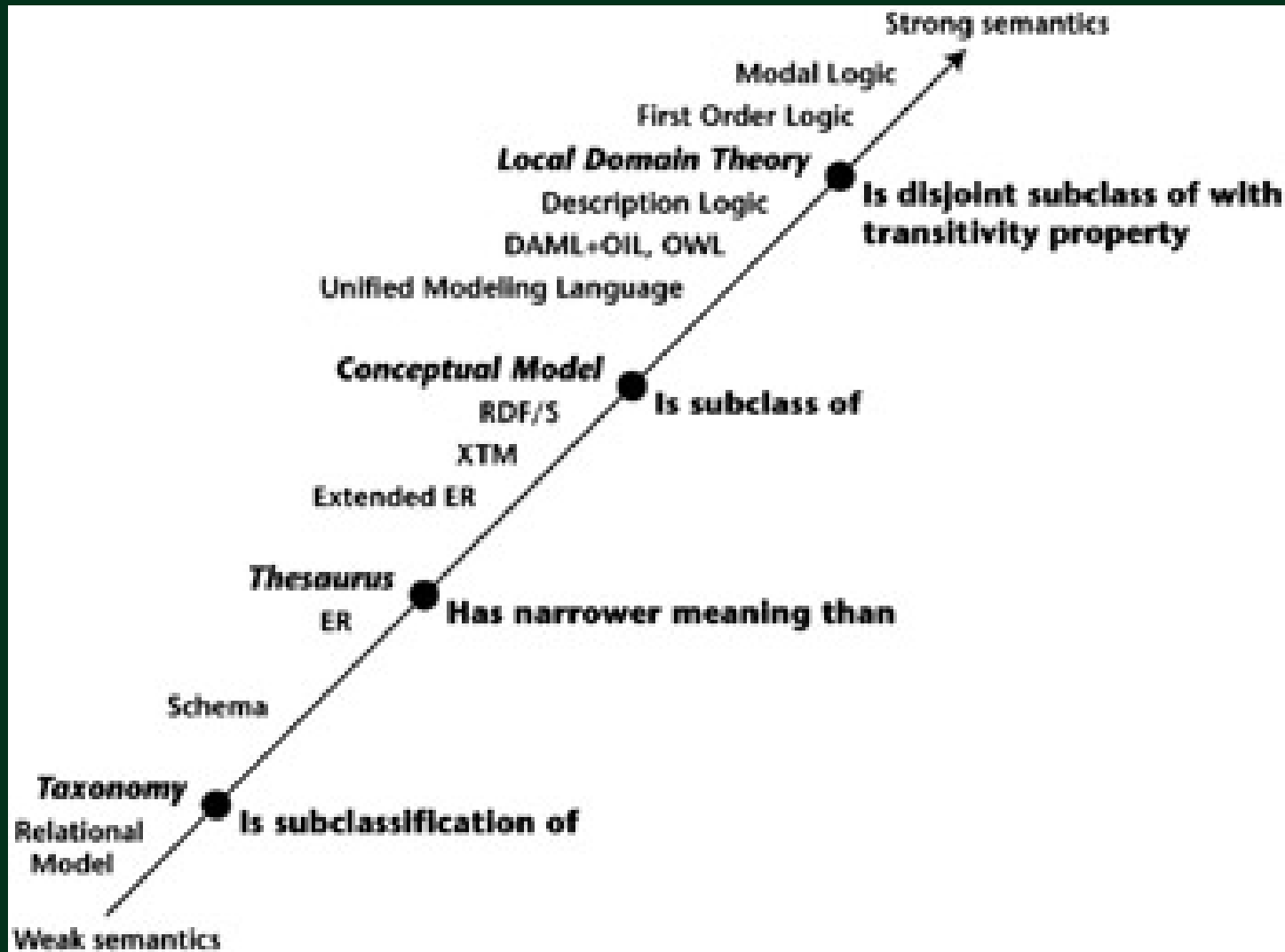
Become an SCA member or create a site account to post comments.

[Sign up or log in](#)

Ethnography and STS face new challenges:

- Study of complex phenomena and open systems involves working in groups instead of working alone.
- Richness of field data, in terms of heterogeneity and complexity of information collected and stored
- Need to share primary data and ongoing analyses, not just results.
- Reveal and reuse the invisible work in ethnography (templates, questions, protocols, etc)
- Qualitatively reading quantitative datasets and datawork
- Crisis of representation and the need for experimentation

This is not “improvement” for us...



Tensions of Structure

Knowledge Representation View

- Structure needed to:
 - Create consistency which is needed to infer new knowledge
 - Show commonality and standards in a community
 - Define logic and single world view

Ethnographer View

- Structuration can:
 - Lock into a single mode of theorizing
 - Organize contradictions and competing epistemologies out of the content

Platform for Experimental and Collaborative Ethnography:
The Asthma Files

Light Structure

- Qualitative term for creating just enough structure that both constrains a user, and encourages creativity and play
- highly useful and ad hoc, incomplete, generative, and mutable.
- Use that is open to (ab)use (e.g. Owl:sameAs)